

This device is a USB to SPI interface (master mode). It can handle the 4 standard SPI modes, and both bit encoding directions. It does not require a driver and does not install a virtual COM port.

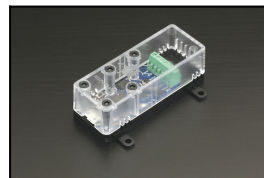
It can autonomously interpret data coming from any external SPI board and expose measures as if they were coming from a Yoctopuce sensor, with all the inherent advantages: unique identifier, polling, callbacks, data logger. Note that this device does not work with applications designed to use a COM port, it is designed to be used with Yoctopuce API only.

If needed, the device can also provide a 3.3V or 5V voltage source to power the external serial board. The 3.3V source can provide up to 200mA. The voltage used for SPI signals can be selected independently of the source voltage.

### Specifications

Product ID	YSPIMK01
USB connector	micro-B
Width	20 mm
Length	48 mm
Weight	6 g
Max frequency	4 Mbit/s
IEC protection class	class III
Normal operating temperature	5...40 °C
Extended operating temperature <sup>‡</sup>	-30...85 °C
RoHS compliance	RoHS III (2011/65/UE+2015/863)
USB Vendor ID	0x24E0
USB Device ID	0x0066
Suggested enclosure	YoctoBox-Long-Thick-Black
Harmonized tariff code	8542.3190
Made in	Switzerland

<sup>‡</sup> The extended temperature range is defined based on components specifications and has been tested during a limited duration (1h). When using the device in harsh environments for a long period of time, we strongly advise to run extensive tests before going to production.



For more information: [www.yoctopuce.com/EN/products/yocto-spi](http://www.yoctopuce.com/EN/products/yocto-spi)